

SYMPOSIUM

RESEARCH ON THE BIOLOGY AND DISEASES OF AGEING IN BORDEAUX

13 NOV 2024
8H30 - 18H30



Campus Carreire
Centre Broca
Nouvelle-Aquitaine

HEALTH

DISEASE



PROGRAM (MORNING)

8h30 WELCOME

9h00 INTRODUCTION

Jérôme Baufreton
Directeur - *Bordeaux Neurocampus*

9h10 - 9h40

Invited speaker 

Chair: Nora Abrous

Brain Aging and blood factors

Lida Katsimpardi - Necker - Paris

Session 1 - Physiology of ageing

9h45 - 11h00

Chairs: Muriel Priault & Catherine Helmer

- **Nutrition and cerebral/cognitive ageing** - Sophie Layé - *NUTRINEURO*
- **Adult neurogenesis and cognitive ageing** - Nora Abrous - *NM*
- **Role of astrocytes in aging** - Aude Panatier - *NM*
- **Immune resilience after 25 years of HIV infection** - Victor Appay - *ImmunoConcept*
- **Sarcopenia in Chronic Obstructive Pulmonary Disease** - Pauline Henrot - *CRCTB*

11h05 COFFEE BREAK

Session 2 - Ageing of vessels and cancer

11h40 - 12h55

Chairs: Katie Sawai & Pierre Soubeyran

- **Imaging Small Vessel Diseases: from human to mice** - Ami Tsuchida - *GIN* et Emeline Ribot - *CRMSB*
- **Retinal biomarkers of cerebral small vessel disease** - Sara Cristina Lima Rebouças - *BPH*
- **Evaluation of epigenetic age as a new biomarker of complications in Myeloproliferative Neoplasms** - Olivier Mansier - *BMC*
- **Expectations and priorities of elderly older patients with cancer: the PRIORITY multicenter cohort study** - Camille Chakiba - *BRIC*
- **Cellular Senescence and Cancer: Exploring the Role of AGR2** - Delphine Fessart - *BRIC*

13h00 LUNCH

<https://my.weezevent.com/symposium-7>

SCAN ME



SYMPOSIUM

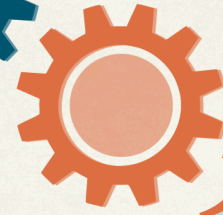
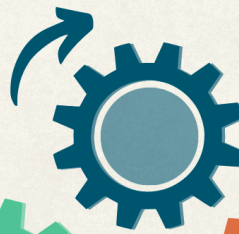
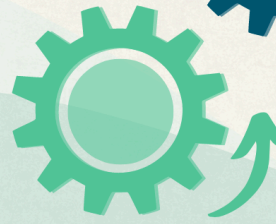
RESEARCH ON THE BIOLOGY AND DISEASES OF AGEING IN BORDEAUX

13 NOV 2024
8H30 - 18H30



Campus Carreire
Centre Broca
Nouvelle-Aquitaine

HEALTH



DISEASE



PROGRAM (AFTERNOON)

14h10 - 15h00

Invited speaker



Chair : Maël Lemoine

Is ageing an illness? Resilience - Adaptive function

Tamàs Fülöp - Sherbrooke - Canada

Session 3 - Cognitive functions and memory

15h00 - 16h25

Chairs: Hélène Amieva & Claire Roubaud

- **Concepts and Paradigms Related to Adaptability and Flexibility in Aging in Experimental Psychology** - Virginie Postal - LabPsy
- **A new task to measure episodic memory in Human** - Nicole Etchamendy - NM
- **Heterogeneity of brain aging : neuroimaging and daily life factors** - Gwenaëlle Catheline - INCIA
- **Sleep pattern, aging and age-related cognitive deficits** - Jacques Taillard - SANPSY
- **Cognitive Predictors of Dementia through Machine Learning** - Ernesto Sanz-Arigita - INCIA
- **Digital health interventions and aging population : indications, acceptability and perspectives** - Alex Chanteclair - CHU/SANPSY

16h30

COFFEE BREAK

Session 4 - Biomarkers

17h00 - 18h05

Chairs: Isabelle Pellegrin & Hamid Rezvani

- **Protein deamidation as a biomarker of aging: evidence and limitations** - Muriel Priault - IBGC
- **Metabolomics, exposomics and brain aging** - Sophie Lefèvre-Arbogast - BPH
- **Multiparametric muscle/brain NMR imaging of frailty and sarcopenia** - Isabelle Bourdel Marchasson - CRMSB
- **Biomarkers of vaccine responsiveness in older people** - Pauline Saint Charles - ImmunoConcept
- **Is Alzheimer's disease specific to humans?** - Clara Toussaint - ImmunoConcept

18h10

CONCLUSION

Victor Appay

Groupe de réflexion sur le vieillissement - Université de Bordeaux



WINE AND CHEESE

<https://my.weezevent.com/symposium-7>

Organizing committee:

Nora Arous, Hélène Amieva, Victor Appay, Isabelle Bourdel-Marchasson, Julie Dechanet Merville, Alain Pierre Gadeau, Catherine Helmer, Maël Lemoine, Olivier Mansier, Isabelle Pellegrin, Hamid-Reza Rezvani, Claire Roubaud, Virginie Postal, Muriel Priault, Katie Sawai, Pierre Soubeyran

CONTACT

Dr Nora Arous Djoher
nora.abrous@inserm.fr

ORGANISÉ PAR :



Département de recherche
ECOr | Évaluation,
comportements,
organisations

Département de recherche
Santé publique

Département de recherche
SBM | Sciences
biologiques et médicales

université
BORDEAUX

AVEC LE SOUTIEN DE :



Inserm



INRAE



Bergonié
UNIVERSITÉ
NOUVELLE-AQUITAINE

GÉRONTOPÔLE
UNIVERSITÉ
NOUVELLE-AQUITAINE

